



AML22CBF2AC MICRO SWITCH™ Pushbuttons and Manual Switches

Image Not Available

AML22 Series, Electronic Control Pushbutton, Square, Standard Bezel, Lighted, 1 LED, DPDT, Momentary Action, Snap in panel mount

RoHS compliant

Product Features

Potential Applications

Features

- Identical to AML21 switches, except furnished with high efficiency LED display.
- Rectangular LED s are flush with button surface, providing wide angle indication.
- Optional diode protection for LED s.
- 5 thru 24 Vdc LED devices have an internal resistor to maintain current at nominal 20 mA.
- UL recognized, CSA certified.
- LED circuit independent of switch circuit.

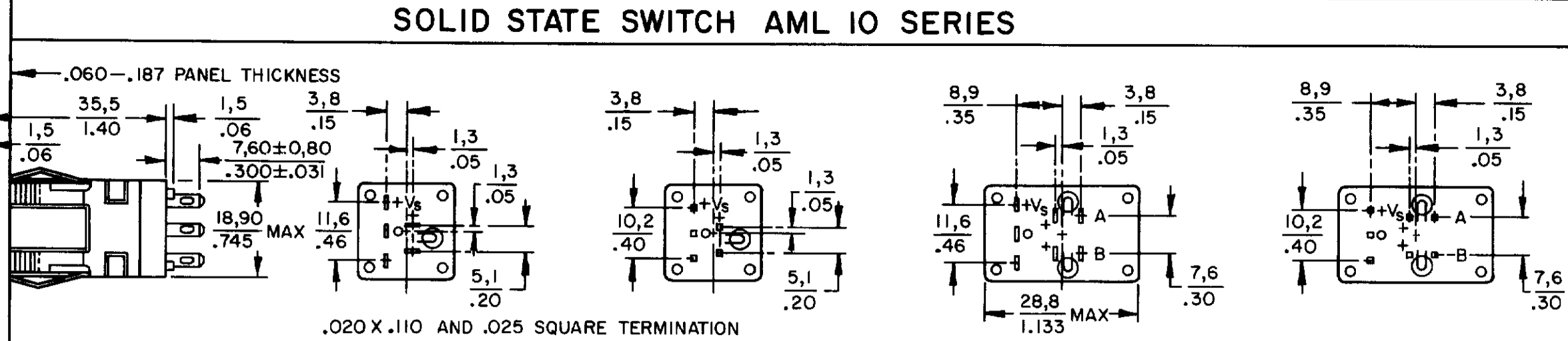
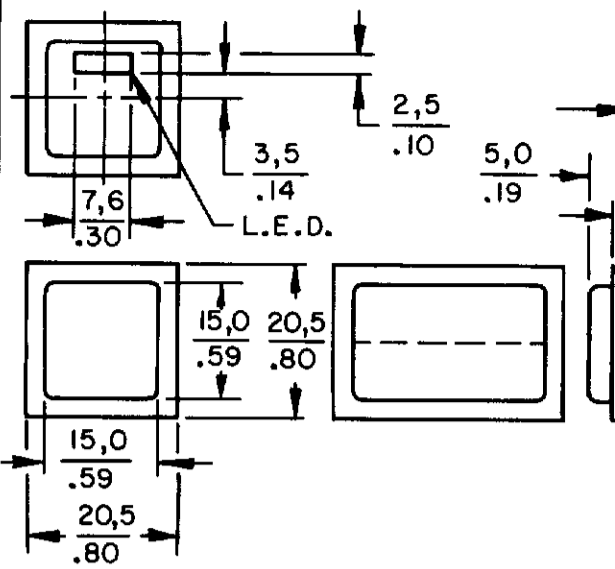


Product Specifications

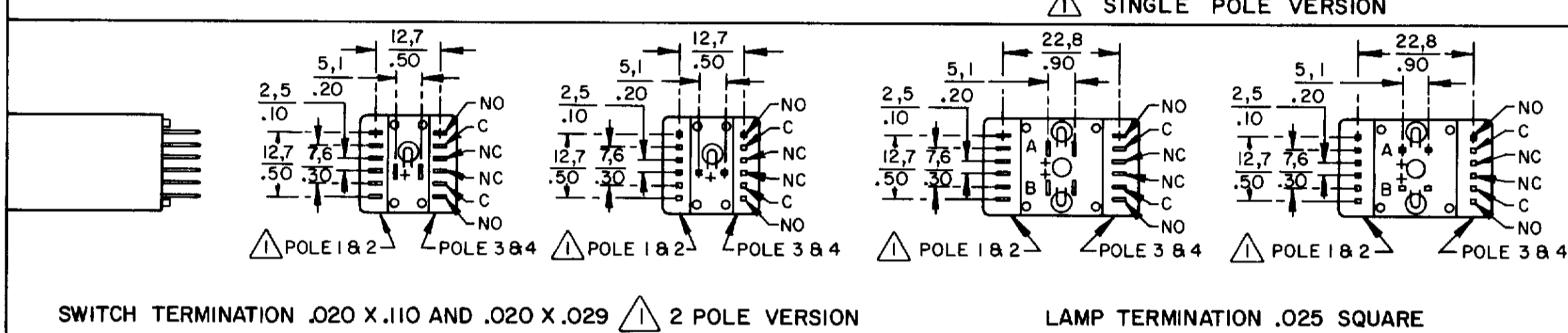
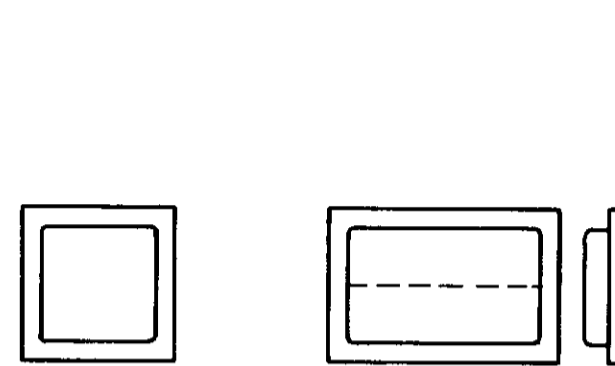
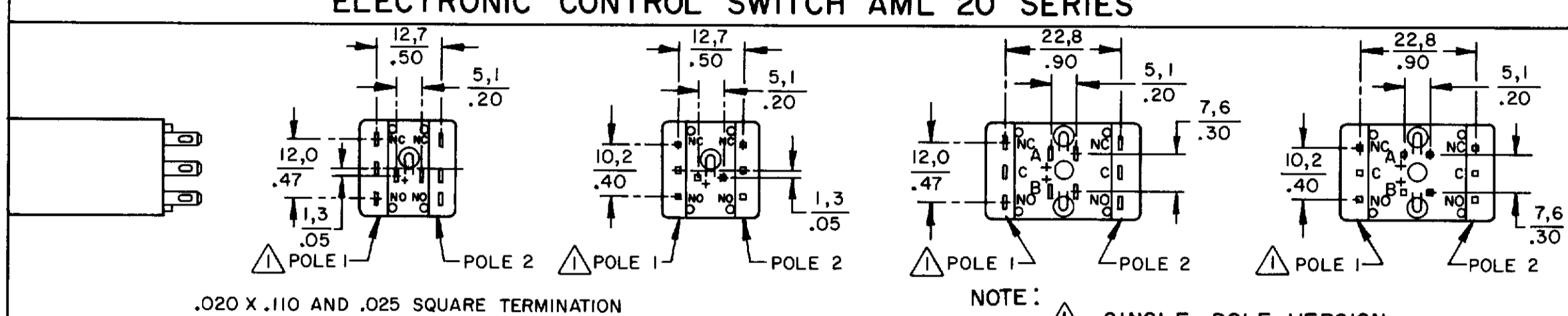
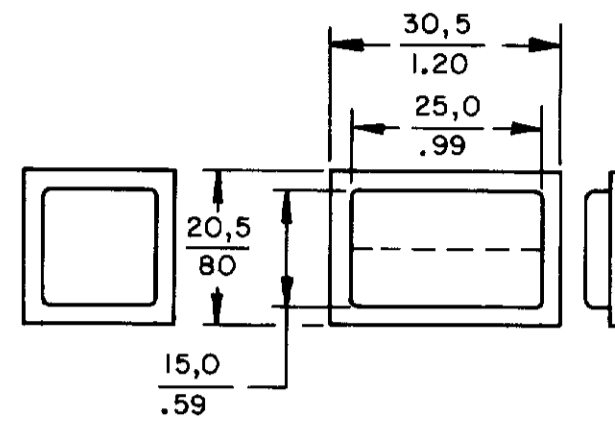
| | |
|---------------------------------------|---|
| Product Type | MICRO SWITCH™ Pushbutton |
| Housing Type | Square |
| Circuitry | DPDT |
| Action | Momentary Action |
| Mounting | Snap-in Panel |
| Lamp Type | Lighted, 1 LED |
| Termination | .110 x .020 (Solder or Quick-Connect) |
| Ampere/Voltage Range (Resistive Load) | 0.4-2 A @ 0.5-30 Vdc, 0.4-2 A @ 0.5 -250 Vac, 0.4-3 A @ 0.5-125 Vac |
| LED/Lamp/Neon Voltage | 24 V |
| LED/Neon Color | Red |
| Comment | use AML52 button |
| Availability | Global |
| UNSPSC Code | 30211913 |
| UNSPSC Commodity | 30211913 Push button switches |
| Series Name | AML22 |

AML PUSHBUTTON AND INDICATOR SERIES

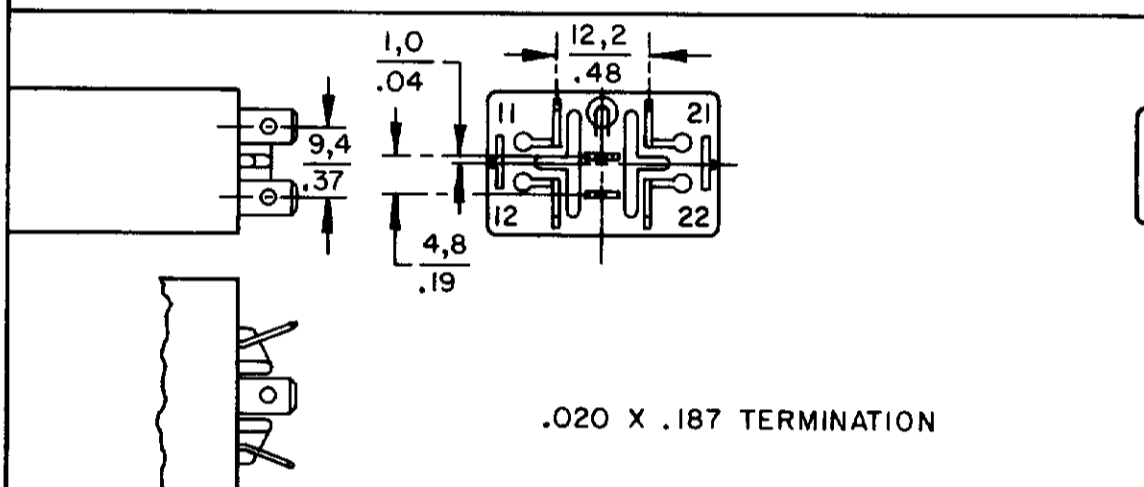
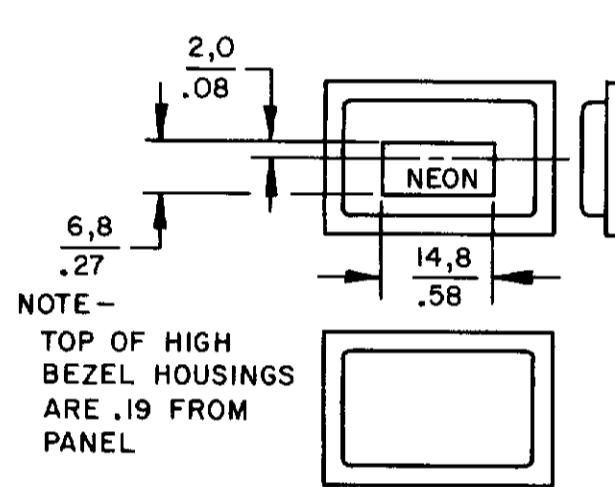
SOLID STATE SWITCH AML 10 SERIES



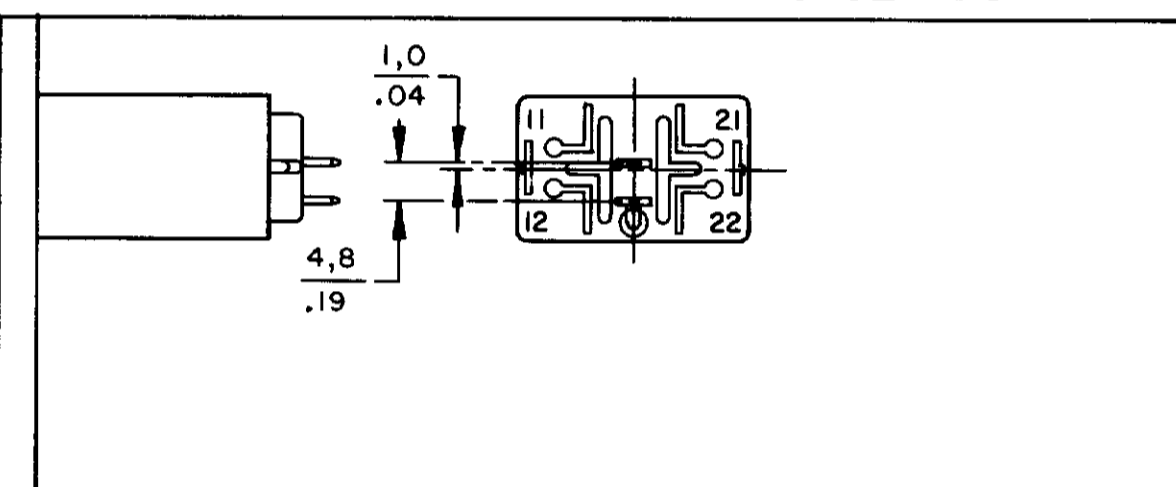
ELECTRONIC CONTROL SWITCH AML 20 SERIES



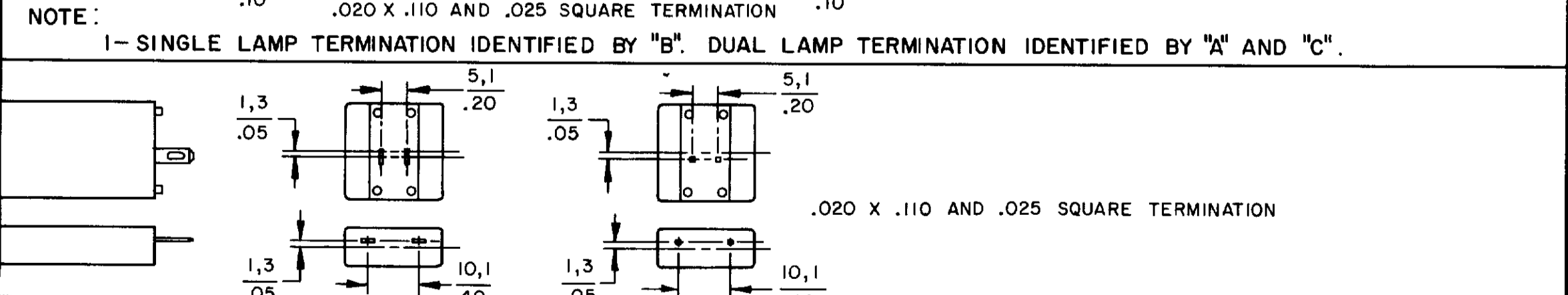
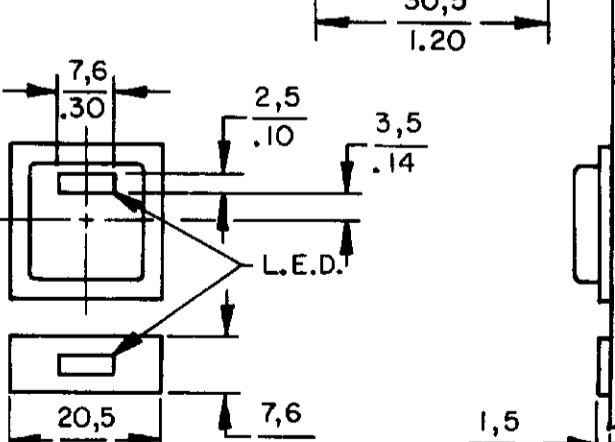
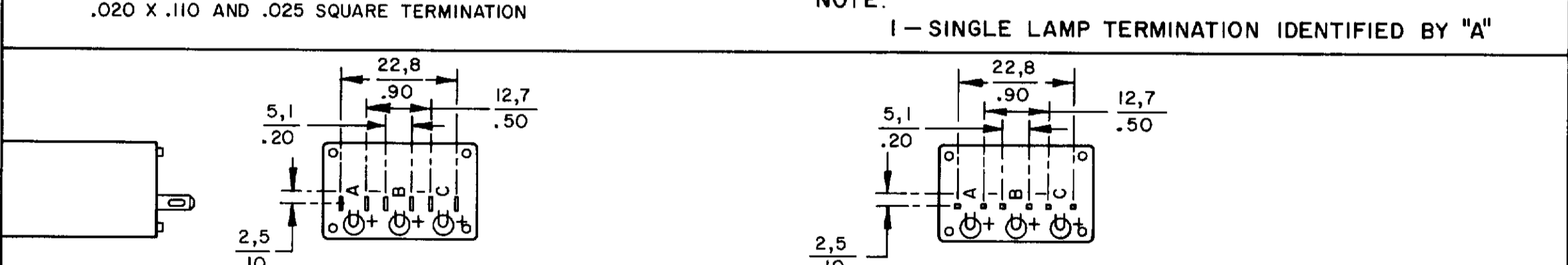
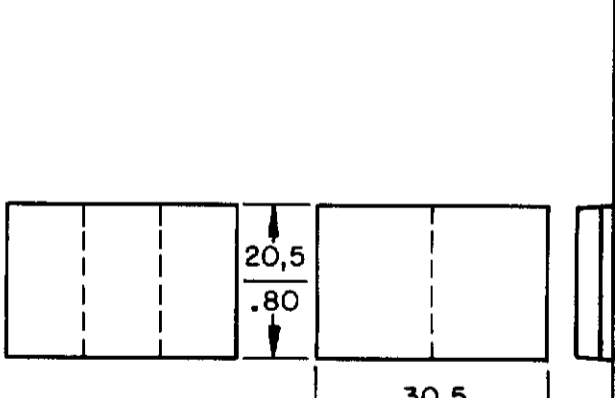
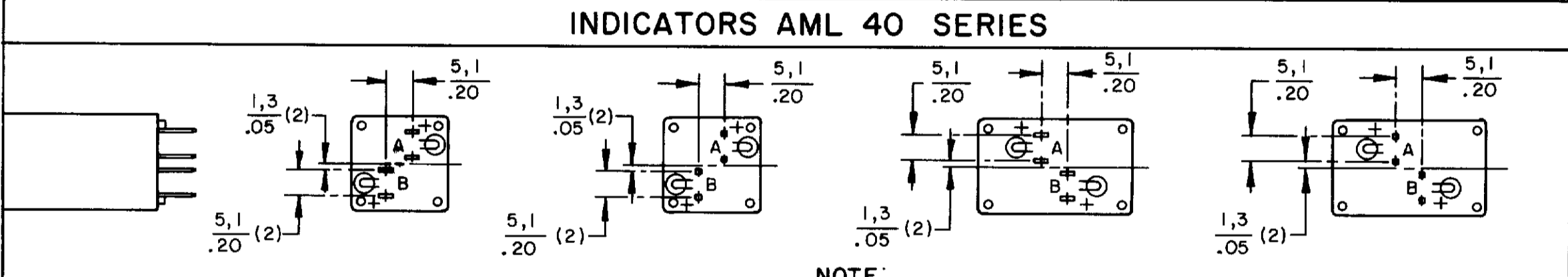
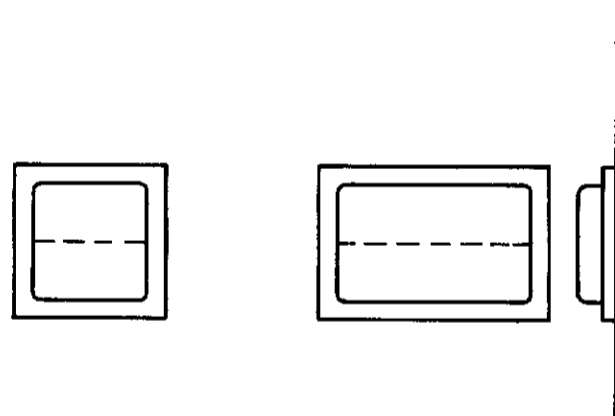
POWER SWITCH AML 30 SERIES



LINE POWER IND AML 43 SERIES



INDICATORS AML 40 SERIES

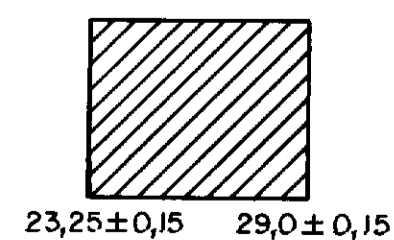
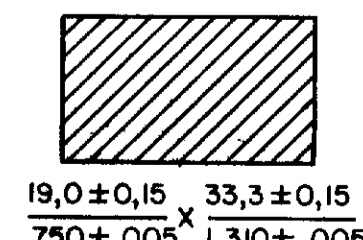
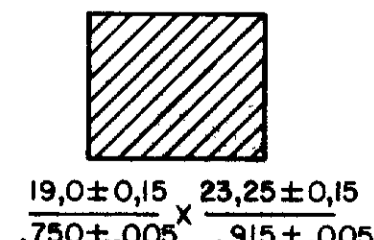
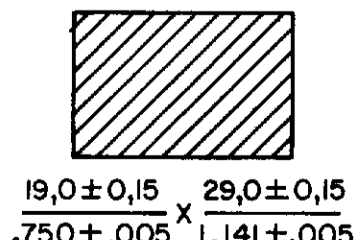
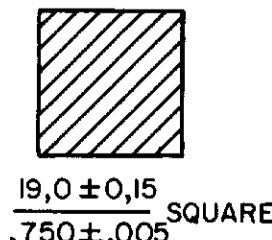
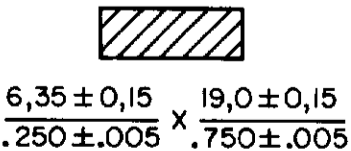


PANEL CUTOUTS

WITHOUT BARRIERS

SHORT BARRIER

LONG BARRIER



| SCALE | | FULL | |
|--|--|------|--|
| DO NOT SCALE PRINT | | | |
| TOLERANCES | | | |
| APPLY TO DESIGN UNITS - CONVERSIONS ARE ONLY FOR REFERENCE UNLESS NOTED OTHERWISE ARE: | | | |
| FRAC INCH | | | |
| DEC INCH | | | |
| MILLIMETER | | | |
| METER | | | |
| NO PLACES | | | |
| ONE PLACE | | | |
| TWO PLACES | | | |
| THREE PLACES | | | |
| ANGLES | | | |
| DI METRIC | | | |
| US CUSTOMARY | | | |
| DESIGN UNITS | | | |
| THIRD ANGLE PROJECTION | | | |
| WEIGHT | | | |

MASTER REDUCED

THIS DRAWING COVERS A PROPRIETARY ITEM AND IS THE PROPERTY OF MICRO SWITCH A DIVISION OF HONEYWELL. THIS DRAWING IS NOT TO BE COPIED OR USED WITHOUT THE APPROVAL OF MICRO SWITCH

MICRO SWITCH
a Honeywell Division

FED. MFG CODE 9122

AML PUSHBUTTONS
& INDICATORS

CATALOG LISTING
AML 10 20 30 40
SERIES CHART 1

CATALOG LISTING
AML 10 20 30 40
PAGE 1 OF 1 SERIES CHART 1
RELEASE NO CO-78498 REPLACES & 40 SERIES
ISSUE 6
REVISIONS
A C09297
B 201477
C 201566
D 201696
E 202971
30 APR 01
DRAWN JAK
CHECK JAF
11 JUL 04
17 JUN 94
RASTER